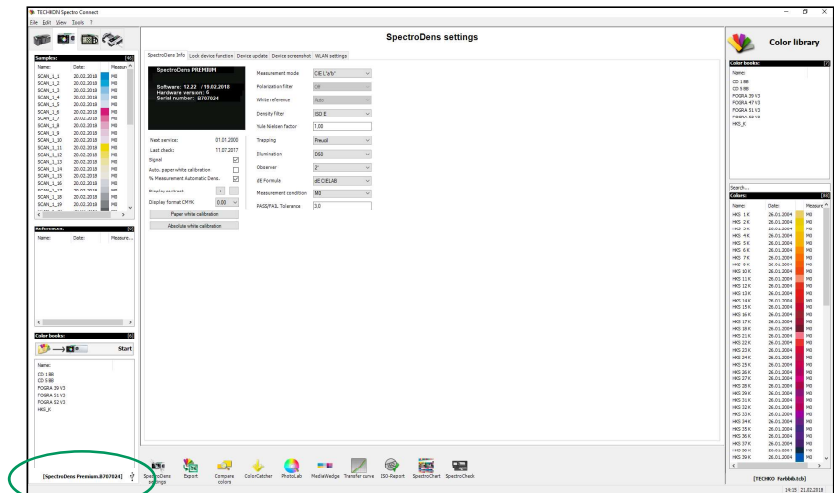
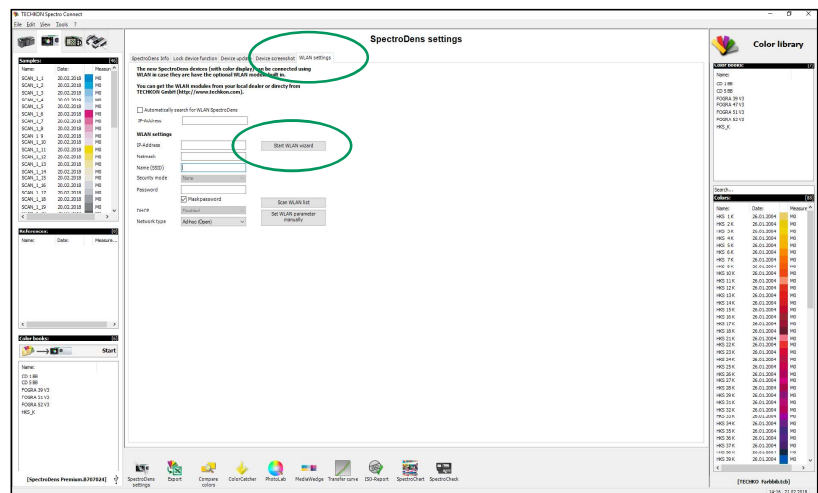


Setup of the WLAN connection

Start the software SpectroConnect, select **SpectroDens settings**, turn on the instrument and connect it with the USB cable to the PC.



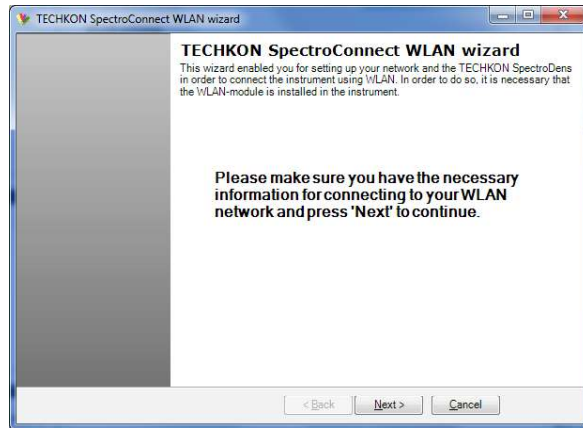
The symbol to the right of the serial number indicates the type of connection; in this example it is an USB connection.



The WLAN settings folder is available after connecting the instrument via USB cable to the PC. To establish a WLAN connection, please **start** the **WLAN wizard**.

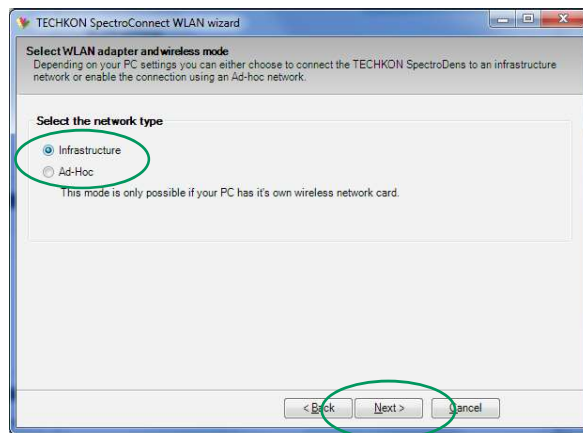
Manual TECHKON SpectroDens

The WLAN wizard will guide you through the setup process.
Make sure you have all information about your WLAN network available.



Two types of WLAN connections are possible: Infrastructure and Ad-Hoc.
Infrastructure should be selected if a WLAN network is already installed in the working area.
Ad-Hoc allows a direct connection to a PC using its WLAN module or any WLAN USB stick.

Infrastructure

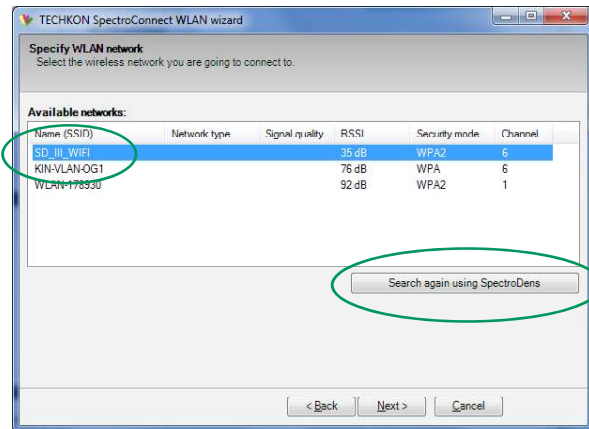


Select **Infrastructure** and click on the **Next** button.

The wizard will show all WLAN networks which are available.

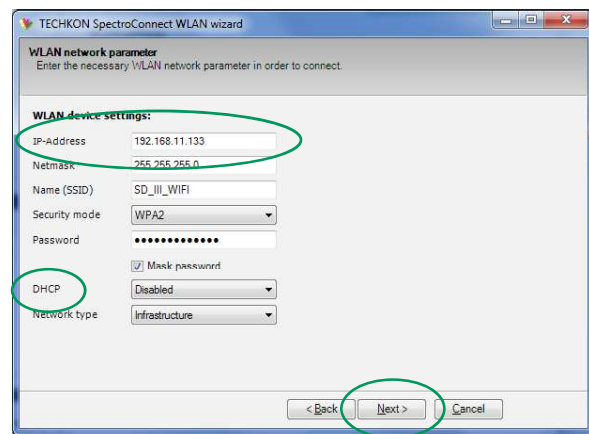
Select your network and click on the **Next** button.

Should your network not be listed you can try again by clicking on **Search again using SpectroDens**.



Please enter the IP-Address, the netmask and the password of your WLAN network in order to connect.

You can enable DHCP if your network is supporting this function. Then a free IP-Address will be used automatically.



After entering the information, please click on the **Next** button.

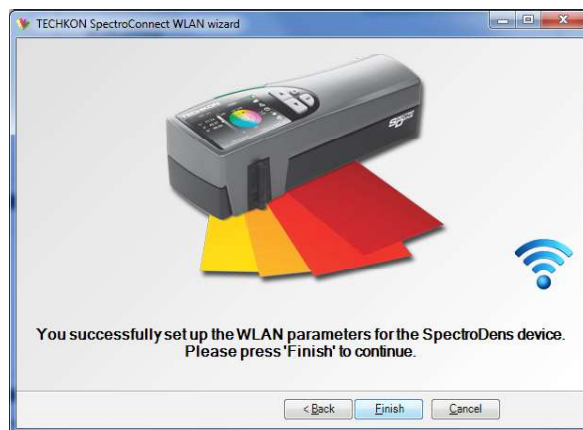
Manual TECHKON SpectroDens

SpectroDens is now looking for the WLAN network and if available will establish a connection.

The gray color of the symbol is indicating the search function. Once the WLAN network is found and the connection is established, the color of the symbol will change to blue.



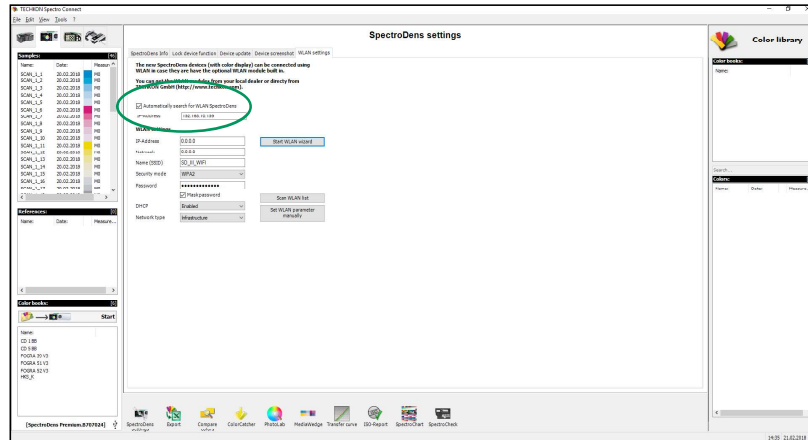
SpectroDens is now connected to the WLAN network and ready to be used wirelessly.



CHAPTER 1 – How to use TECHKON SpectroDens

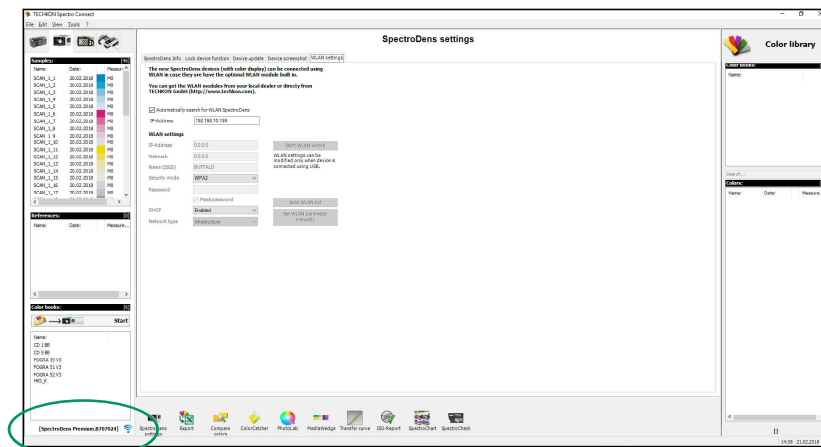
The settings will be applied and shown in the WLAN settings.

By activating the function **Automatically search for WLAN SpectroDens** the connection will be established automatically when used next time.



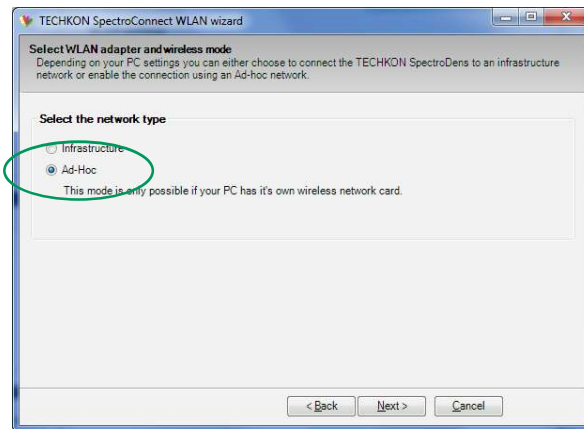
Now you can disconnect the USB cable.

The connection via WLAN will be indicated by the symbol next to the serial number. The blue color of the symbol indicates an active connection.



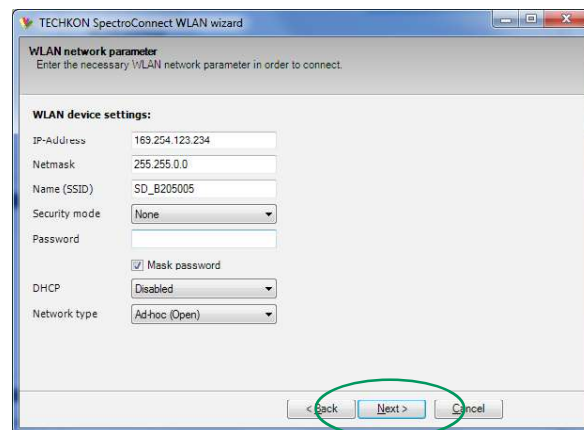
Ad-Hoc connection

To establish an **Ad-Hoc** network select this function during the wizard setup.



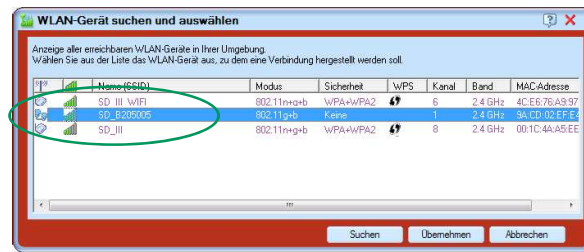
The IP-Address, the netmask and the name (SSID) of the network are predefined in this case and will be shown for your information.

Click on the **Next** button to continue.



Use the software of your WLAN network card or WLAN USB stick to setup the WLAN connection to your device

Select the WLAN network named after the serial number of your device.



Confirm the settings and check the connection.

Once the connection with your network card or WLAN USB stick is established you have to go back and click on **Repeat search** to connect SpectroConnect to the WLAN network.

A successful connection will be indicated by the blue WLAN symbol.

Continue in the same way as described for the infrastructure network (see p. 29).

