

High-End Color Measuring for Offset Printing

Combining a color scanner and vacuum system

TECHKON

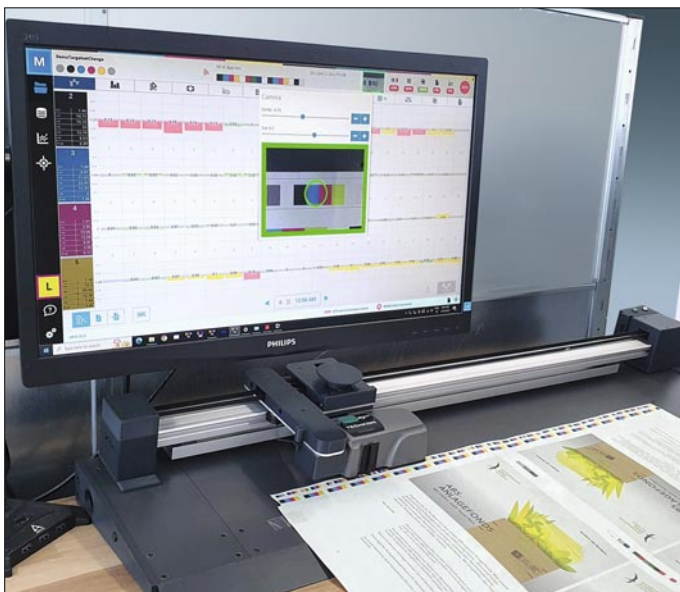
with Techkon's Spectrojet scanning spectrophotometer brings efficiency and color stability to the offset printing press. The IZ Move software package visualizes all parameters of the print run in real time. Optionally, IZ Move can both document the color processing with IZ Report as well as calibrate the prepress workflow with IZ TVI. Automated color



measuring is elegantly combined with InkZone's best-in-class ink key presetting and closed-loop color control functions. Being a modular and modern solution, the InkZone production suite for complete color control is a quality booster for almost any offset press. IZ ColorTrail SpectroJet is a groundbreaking, cost-effective solution.

InkZone ColorTrail combines automated scanning of the color bar with a vacuum system and the SpectroJet spectrophotometer: another great advance of InkZone's functionality on the printing press.

- Supports offset presses with a color bar length of up to 200 cm.
- Modular: The system can be enhanced with InkZone's ink key presetting (IZ Perfect) and closed loop color control (IZ Loop) solutions.
- The entire color bar is measured within seconds and visualized inside the InkZone Move software.
- A digital camera checks the accurate control strip position and shows immediate warnings regarding incorrect measurements.
- A perfect retrofit solution for existing printing presses: Accurate color control for old and new offset machines..
- Excellent substrate fixation with vacuum system.
- Measurement of density (M3) and ISO compliant spectral data according to M0/M1 standards.
- Perfectly suited for short and long print runs.
- Significantly reduced paper waste by accelerating perfectly consistent color control: less complaints and more happy customers.
- Excellent price/performance ratio: ROI within a few months.
- CMYK and spot color database for printing on different substrates.



InkZone Move visualizes all color measurements of the SpectroJet spectrophotometer in real time.

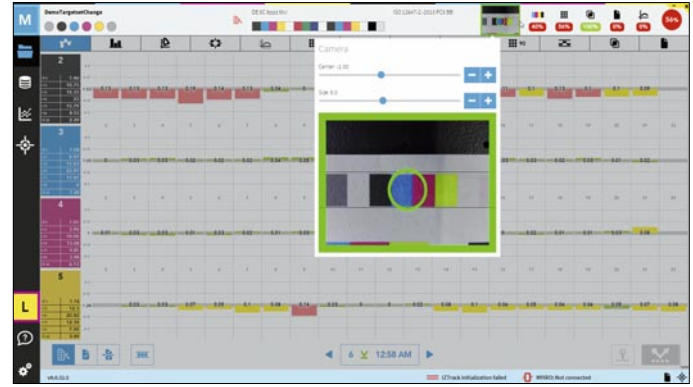


Offset press with InkZone ColorTrail and the Techkon SpectroJet spectrophotometer.

InkZone ColorTrail with Techkon SpectroJet



Techkon's SpectroJet spectrophotometer mounted on the InkZone ColorTrail automated track.



A camera checks the color bar position constantly. IZ Move shows automated warnings about scan errors.

Specifications of SpectroJet spectrophotometer

- Spectral range 400–700 nm, wavelength pitch 10 nm.
- Color patch size 4 x 4 mm (height x width).
- Measurement conditions M0, M1, M2 and M3.
- Viewing system 0°.45° (angular illumination).
- Scanning length up to 200 cm.
- Density range 0.0 D–2.5 D.
- Data transmission and power supply with IZ Track: USB port.

Ready for Replacement

Many offset presses in daily production are equipped with legacy or defective color control systems, ready to be substituted by IZ ColorTrail:

- Heidelberg Axis Control, Image Control, CPC 24.
- KBA Koenig & Bauer Densitronic.
- Manroland FDM 17, FDM 19, FDM 20.
- Komori PDC, PDC-L, PDC-S, PDC-SX.
- Ryobi & Mitsubishi RMGT PDS-E.
- GMI Claris, Cosar and ColorQuick.

Specifications of InkZone ColorTrail with the SpectroJet spectrophotometer

- Scanning length up to 200 cm.
- Perfect tracking control and measurement visualization exclusively performed by the IZ Move software package.
- Fully automated scanning start by IZ Move.
- Black backing scanning surface.
- Motorized movement of the SpectroJet spectrophotometer.
- In most cases, the complete system can be installed on the press console's existing desk. Adding of a base plate may be necessary.
- A vacuum system is recommended to be installed for IZ ColorTrail with the SpectroJet.



Link to the video with IZ ColorTrail and the SpectroJet.

An automated vacuum system for InkZone ColorTrail

The vacuum system for IZ ColorTrail with SpectroJet allows secure fixation of the substrate. The impact of slight paper imperfections is eliminated; the sheets remain perfectly attached throughout the color scan. The amount of substrate-related

incorrect measurements is drastically reduced due to the stabilized sheet positioning. Preventing inaccurate measurements enables both faster achievement of the desired target color as well as more stable press runs with every printing job.



Back side of the vacuum system with magnetic fixation.



Two rows of vacuum holes for substrate fixation.



A powerful vacuum pump holds a firm grip on the paper.

Technical data of vacuum system

Air suction system for IZ ColorTrail with SpectroJet

- Supports the combination of IZ ColorTrail with SpectroJet exclusively.
- Workflow exclusively controlled by the IZ Move software package.
- Robust base unit in any length matching IZ ColorTrail.

Vacuum pump

- Power connection 110/220 volts, 0.45 kW.
- Weight 13 kg.
- Maximum vacuum 120 mbar.