

Faster Press Setup, Minimum Paper Waste

Digital Online Ink Key Preset

InkZone Perfect delivers economical, state-of-the-art ink key presetting technology for almost all offset presses. Thanks to InkZone, you can unleash the profitability that is hiding in your pressroom.



Small Gap, Big Opportunity

In many printing companies, the digital workflow stops with plate imaging. Preflight, layout, color corrections, proofs, plates and that's it. The press may have some digital controls, but in most shops, there is still a gap between the prepress workflow and the controls in the pressroom. Unfortunately, this means that the

valuable capability to leverage prepress output data in order to preset ink keys on-press remains unused. And because existing proprietary connections often come with high investment costs, there is little incentive to close what might be perceived as just a small gap in the flow of data. That said, many small to mid-sized companies will be throwing away

the opportunity to achieve significant savings, better efficiency and greater quality. It was in response to the clear need for a comprehensive and cost-effective solution for ink-presetting and closed-loop that Digital Information developed InkZone.

InkZone is an intelligent, JDF-enabled concept for closing the prepress to press

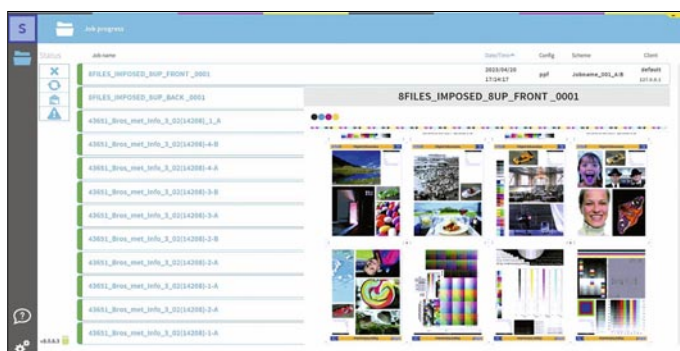
IZ Plot: Interfacing InkZone with Prepress Workflows

The modern client-server application IZ Plot calculates ink key coverage data out of many different bitmap file formats generated by prepress workflows. Therefore in many cases the investment in a costly CIP 3 workflow output plugin can be bypassed. IZ Plot reads CIP3/4 based PPF files as well as standard TIFF or PDF data. This universal link between workflow and the InkZone driven press console works equally well inside both older and modern technology environments.

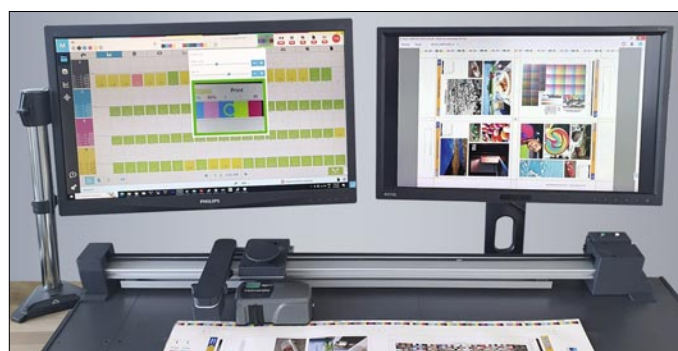
One license of IZ Plot is distributing ink key coverage data and job thumbnails fully automated to multiple offset presses connected by InkZone. Thus only one license IZ Plot per production plant needs to be licensed: Another money saving effect for InkZone customers.

Optionally IZ Plot Server is able to deliver additional administrative data or color managed PDF files directly from prepress workflows to the IZ Plot Client at the press console. Another important step to efficient data handling and faster job changes on every offset press.

Thanks to the CIP4/JDF functionality of IZ-Plot and InkZone Perfect, virtually any prepress workflow can now be extended directly into the pressroom via straightforward InkZone-XML, even to presses of different age or origin. No need to invest in expensive, proprietary work flow plugins for outputting obsolete CIP3 files. IZ-Plot takes you directly there.

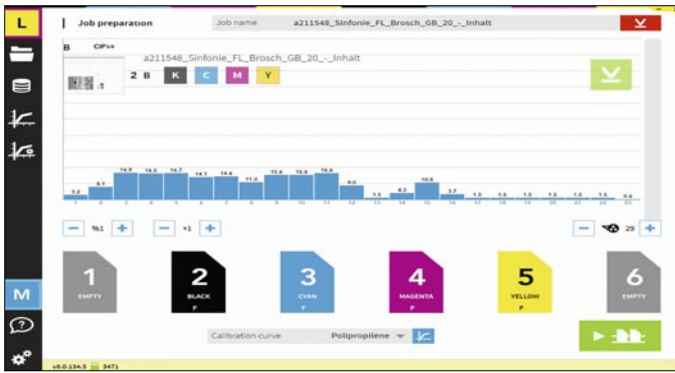


IZ Plot Server: Fully automated data handling from any prepress workflow into InkZone Perfect connected to the offset press console.

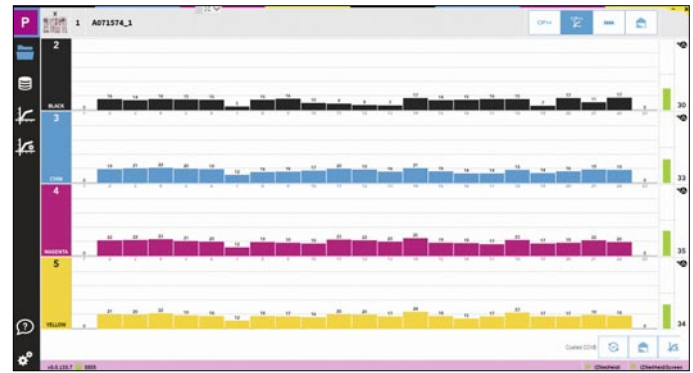


IZ Plot Client: The combination IZ-Plot Server/Client brings job data to the printing machine and permits color managed soft proofing for the press operator.

Faster Press Setup, Minimum Paper Waste



Jobs from prepress workflows arrive via IZ-Plot in IZ Perfect. With drag & drop they are loaded into the press.



InkZone Perfect sends initial ink key settings and ductor/sweep values online into the offset press console.

workflow gap. InkZone is independent of all press manufacturers. Thanks to dedicated interfaces, a unique method to make a network connection to most any press console – even on older offset presses – and a low price point, closing the workflow gap is attainable for printing operations of all sizes.

JDF-Supported Ink Key Presetting

InkZone is based on JDF technology and is fully compliant with global workflows and international standards. The IZ Plot software sends ink coverage values in the form of JDF files into the InkZone Perfect database for conversion to calibrated machine- and print-related values for presetting the ink keys and ductor rollers. The InkZone hardware components send this data via network and in the specific format required by the press console.

Greater Efficiency, Higher Quality, Fast ROI

With InkZone, Digital Information offers an interface between prepress and press that's equally powerful and economical. First, the solution provides networked ink key presetting, so color start-up is accomplished in a fraction of the previous time, bringing a clear increase in productivity. What's more, InkZone generates a database of your settings, allowing corrections and continuous improvement in results over time. This makes InkZone a component that's indispensable on the road to a standardized printing process. Consider the following: As you use InkZone Perfect, it compares the computed preset data

with the corrected values during each press run. By reading back the values measured throughout the print run, the calibration curve for a given set of printing conditions can be continuously corrected and will gradually approach an optimum. When it comes to repeat orders, that means a further boost to the speed of set-up sequences, significant savings in paper, and a permanently stable, high-quality printing process.

An investment in extending your workflow to the pressroom with InkZone from Digital Information is worthwhile. Based on the results we have seen in

thousands of InkZone installations worldwide, the InkZone solution can deliver an ROI within a few short months.

Ready for Replacement

Many offset presses in daily production are equipped with legacy or defective ink key preset systems. Usually with no or very limited calibration tools to handle individual press conditions; ready to be substituted by InkZone:

- Heidelberg Prepress Interface.
- KBA Koenig & Bauer CIP Link.
- Manroland Pecom and Press Manager Perfect.
- Komori Bladesetter, PQC CIP Communicator.
- Ryobi & Mitsubishi RMGT IVS Ink Volume Setter and Ink Saver.
- Lithotel Colorlinx.

Online Connection for Every Offset Press

Using the appropriate hardware components, ink key presetting with InkZone can be realized on almost all offset presses. The IZ Link, IZ Strip,

IZ Tape, IZ Net, IZ eFloppy and IZ Wire connections support press consoles/offset presses from almost all manufacturers.



InkZone Perfect comes with connections that are suitable for networked ink key presetting on almost every printing press.