

# Jordi Ltd. Churns Out 8-up Two-sided Prints with New Preproofer 970

**Jordi Ltd. in Belp/Switzerland recently expanded their offset press production format from 4-up to 8-up whilst relocating to a newly erected building near Berne Airport. This move also entailed upgrading the CTP department to supply 8-up plates. Since production started at the new premises, the latest-generation Preproofer 970 has been on duty to generate double-sided imposed proofs to match the press output.**

In January 2011 Jordi Ltd. in Belp (Switzerland) kicked-off production at their functional new building, boasting floor space of 36,600 square feet (3,400 square meters). Their sheetfed offset printing output has been migrated from two 4-up 20" x 28" (50 x 70 cm) format machines to a single KBA Rapida 106 eight-color configuration, with an 8-up 28" x 40" (70 x 100 cm) format. This new eight-unit press is flexible and can be configured for either 8/0 straight-through printing, or for a 4/4 perfecting output.

A key consideration with the larger-format workflow is having the means to visually check the imposed print forms, which are calculated by the platesetter RIP, using a physical printout before sending them to the platesetter. With the latest-generation Preproofer 970 (having a paper width of 43"/109 cm), Jordi can fulfill this task by printing out double-sided form proofs that are fully imposed in just one pass.

### **Expensive downtime prevented**

The double-sided printing system provides formproofs of the printing plates for the new KBA Rapida 106, as well as for a

Speedmaster SM 52-2. The KBA 28" x 40" eight-color machine has been in action nearly full-time for three shifts daily since being put into service. Approximately 6,000 printing plates have been imposed and proofed during the first five months at the new building, including the plates for the A3 format Speedmaster.

Klaus Gasser was responsible for printing production at the former location and is therefore familiar with the older Preproofer 740. Hence he is well acquainted with the system and appreciates the routine in which the imposed print forms are checked as proofs before they are used to make plates. «With the hectic nature of each day, sometimes mistakes only get discovered at the very last minute. In such cases, the plates are already mounted on press and the obvious consequence is the potential for costly remaking of plates and lost time», says Klaus Gasser. He adds «Prevention is



*Jordi Ltd. located in Belp, Switzerland, moved into an elegant new building near Berne Airport in January 2011.*



*Along with the change from the 20 x 28" format (50 x 70 cm, 4up) to the 28 x 40" format (70 x 100 cm, 8up), Jordi Ltd. also upgraded their proofing output by investing in the new Preproofer 970.*

# Digital Information

even more valuable when the plant is faced with finding a mistake only after an order has been completed, with the only remedy being an expensive re-print of the whole run.» He hints at another remarkable factor. «By investing in new press technology, we are now working in a mixed workflow environment, juggling components from several different manufacturers. For pagination and layout alone we find it very helpful to have the confidence in a one-to-one facsimile of the layout in a proof before the imposed form is sent to the platesetter.»

## **Trusted Output**

The most prominent feature of the Preproofer concept is that it is based on the same data that is calculated by the original imagesetter or platesetter RIP. Digital Information's DI-Plot software, which can establish a link to virtually any prepress workflow, is the integrated front-end for every Preproofer. DI-Plot simply adapts the fully-imposed bitmap to the resolution of the double-sided inkjet proofing system, thereby guaranteeing full content and layout accuracy to the plates and print job.

This allows the CtP operator, production team, and customer to visualize the complete printing form – including color accuracy, all marks, traps, overprints and bleeds – prior

to making plates or starting production. Unlike booklet proof solutions, which can only refer to single, isolated PDF pages and never to an imposed and Ripped print form as a whole, Digital Information's unique Preproofer systems image both sides of the fully-imposed print job in just one pass. The Preproofer output can then easily be folded, cut, stitched, assembled with other forms and evaluated as if it were a printed sheet coming from the press delivery.

## **Seeking Entrepreneurial Independence**

Jordi Ltd. is one of the longest-established commercial printing facilities in Belp, Switzerland and the surrounding region. Friedrich Jordi founded the acclaimed printing business in 1897. Since then the company has grown to a staff of 87. These days, the founder's great-grandson, Bruno Jordi, is the fourth-generation leader of the ever-advancing organization. Apart from printing the official local gazette, Jordi Ltd. has also established a strong foothold with overall solutions for magazine and periodical production, including graphics, logos, text, and website development. With the recent relocation to their new building, the tradition-rich company has reinforced its ambitions to retain its entrepreneurial independence and to stand their ground as a trendsetter in the media market.



*Klaus Gasser of Jordi AG: «Thanks to the Preproofer, from the outset we are able to recognize possible mistakes on the imposed printing plates, and effectively prevent any costly rework.»*

# Appenzeller Medienhaus Reaps Rewards of Formproofer Upgrade

Appenzeller Medienhaus Ltd., a commercial print shop in Herisau, is an ongoing early adopter of Preproofer technology from Digital Information. The original system used at the busy printer was a Preproofer 7600, installed shortly after being originally launched at Drupa 2004. Now the company has replaced the seven year-old imposition proofing system with the latest Preproofer model 770.

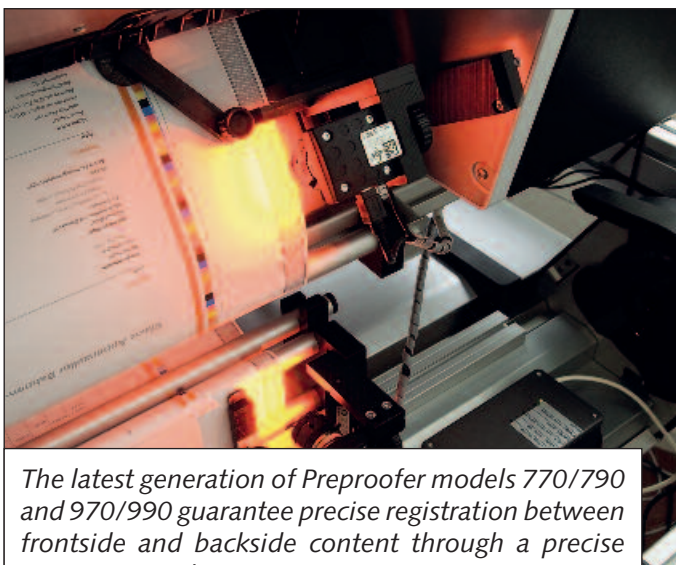
Appenzeller Medienhaus Ltd. wasted no time in becoming one of the first existing users to express an interest in adopting the latest developments in formproof production. Appenzeller Medienhaus have been producing fully-imposed proofs on a Preproofer 770, which has a paper width of 23" (59 cm), in order to check layouts for three presses: a Speedmaster CD 74-5+L, a Speedmaster XL 75-4-P+L and a Speedmaster SM 52-2. The printing plate volume at their facility is around 1,800 per month for just the two 20 x 28" format machines.

### **Main Concern: Registration Accuracy**

«Only an imposed form proof originating directly from the data RIPed for platesetter use can give us the confidence that our on-press color okay will match the image setting data, assuring us that only error-free printing plates go to press», says Markus Hager who is head of prepress and therefore also responsible for proofing output. On his recommendation,

the management team was convinced that imposition proofs are such an effective control technology that cost savings can be achieved to easily justify investment in the replacement Preproofer model 770.

«With the new Preproofer generation Digital Information have substantially refined the system» assesses Markus Hager. «Compared with the predecessor model we can now work at least twice as fast. This speed factor becomes even more important when short-term orders have to be executed, a trend that has been going on for quite some time. In our opinion the Preproofer's newly designed register control is another great asset as we use the RIPed and imposed form-proofs not only for internal control, but we also keep sending these folded up printouts as imposition proofs to the customer. It is of vital importance for us that quality is right in every respect, and that includes front-to-back registration» Markus Hager explains.



*The latest generation of Preproofer models 770/790 and 970/990 guarantee precise registration between frontside and backside content through a precise camera control system.*



*The launch of the Preproofer 790/990 raised the interest of Appenzeller Medienhaus Ltd. at Herisau, Switzerland, who again were among the first users.*

## ***Service Provider in a Group of Companies***

Together with the newspaper Appenzeller Zeitung and the publisher Appenzeller Verlag, the print shop Appenzeller Druckerei is united under one roof as part of the Appenzeller Medienhaus Ltd. conglomerate, which itself is a subsidiary of the St. Galler Tagblatt newspaper. Appenzeller Medienhaus Ltd. forms a rich reservoir of expertise concerning the preparation, processing and production of information over different channels. Apart from job printing, the Appenzeller Druckerei reaches a remarkably good capacity utilization by printing books (approximately a dozen titles per year), a range of monthly journals and almanacs published by Appenzeller Verlag.

## ***The Third Preproofer Generation***

With the 770/790 models for the 20x28" format (50x70 cm) and the 970/990 models for the 28x40" format (70x100 cm) the third Preproofer generation is now available. These new systems rely upon the advanced Epson Stylus Pro 7700/7890/7900 and 9700/9890/9900 inkjet print engines. The latest Preproofers feature 40 percent faster print speed

and extra precise front-to-back print registration on the roll-fed paper. Improved registration accuracy is driven by a newly-developed control system featuring high-resolution video cameras that monitor the output of the two integrated inkjet printers.

The control system makes use of a 128-bit code printed near the edge of the web, making micro adjustments to the paper in order to achieve precise alignment. After the paper has traveled through the two printers, the roll is cut to the appropriate sheet format. The control system also monitors the real-time status of printer readiness, ink fill level, printing progress and paper supply, using SNMP (Simple Network Management Protocol).

In addition, the Preproofer 790/990 also now prints on lighter weight substrate – handling paper of 90 g/m<sup>2</sup> instead of 120 g/m<sup>2</sup> used in previous models. In addition to accommodating increased paper capacity on each roll, the output of the proofer is also easier to handle, especially when larger print forms (from the Preproofer 990) are folded into a final mock-up of 16 pages or more. The results are notably superior to the bulkier stocks used on prior Preproofer generations.



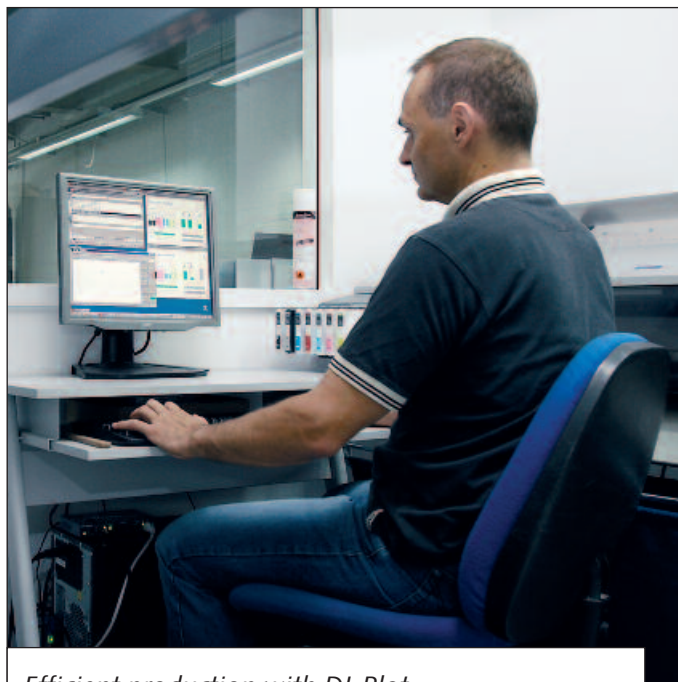
*Markus Hager of Appenzeller Medienhaus Ltd: «With the new Preproofer generation Digital Information have substantially refined the system.»*

# A Proofing Solution Legacy, Now in It's Second Generation

With the Preproofer 945, Rheintaler Druckerei und Verlag AG is saving money, materials and time. The system produces more than twelve 16-page DIN A4 double-sided imposed proofs per hour – in a single pass, with an excellent register and exceptional print quality.

## *Closing the Last Gap in the Digital Workflow*

Even though workflow systems are aimed at combining process steps into a fully automated production flow, this chain is often broken when it comes to hand assembly of imposed proofs. The gains made in productivity up to that point are then abruptly lost, and the sizeable investments made in a capital-intensive, digital workflow can be called into question. That's why, back in 2005, the Rheintaler Druckerei und Verlag AG closed this final gap in the workflow with an investment in the Preproofer 960, the state-of-the-art solution available at that time. Now, just three short years later, the company has upgraded to the latest 945 model, and has seen productivity double compared to the previous system.



*Efficient production with DI-Plot.*

## *DI-Plot: a Powerful Nucleus*

According to Prepress Manager Urs Staudacher, «the Preproofer 945 is the definition of efficiency and quality. We have invested once again in a solution from Digital Information because we can count on the efficiency and reliability of their products. And thanks to the Epson inkjet technology, we achieve a level of productivity that no other double-sided proof system is able to deliver.»

Staudacher recognizes DI-Plot as a crucial element in the overall system. This software nucleus of the Digital Information solution repurposes bitmap files generated in the RIP imaging device in order to create fully-imposed proofs. As a result, Urs Staudacher can rest assured that the proof and the printing plates contain identical content and positioning. In addition, DI-Plot is used for data management and Preproofer control tasks, making both daily operation and occasional maintenance much simpler.



*The Preproofer produces double-sided imposed proofs with no turning module. For Urs Staudacher, that makes it the winning solution also from the conceptual point of view.*

## ***Perfect Results, Front and Back***

For Urs Staudacher, the Preproofer 945 is the premier imposed-proofing solution. He says «Our past experience convinced us of the product's simplicity, elegance and efficiency. Thanks to the staggered arrangement of the printers one above the other, double-sided proofs are generated in no time».

The Preproofer 945 operates from roll to sheet, with the front printed from the paper roll, and the back imaged onto the previously printed and cut sheet. Because the second printer is fed by gravity and optically checked to ensure exact register, the solution is incredibly reliable and accurate. «The system is perfect. There is no need to turn the paper, so no mechanical devices are required whatsoever. This dependability means less maintenance and far fewer spare parts», says Urs Staudacher.

### Configuration, Preproofer 745/945/788/988

---

#### **1x Kit DIL Preproofer**

Software package DI-Plot.

Stand-rack and guide unit for the Epson Stylus Pro 7450, 7880, 9450 or 9880 printers.

Electronic control unit for Preproofer 6'/15 cm core adapter for the «Mediaware DIL Preproofer» paper range from Tecco (24"/61 cm or 44"/111 cm width)

---

#### **2x Large-Format Epson Printers**

In each case two Preproofer-matched

Epson Stylus Pro 7450 (C11C594011)

Stylus Pro 7880 (C11C594001)

Stylus Pro 9450 (C11C595011) or

Stylus Pro 9880 (C11C595001)

The printers must be connected via Ethernet ports.

---

#### **1x PC**

CPU Intel Core 2 Duo, 2.x GHz, 2 GB RAM, 80 GB hard disk, 10,000 RPM, 19" TFT monitor (Touch screen recommended), USB, 2x Ethernet

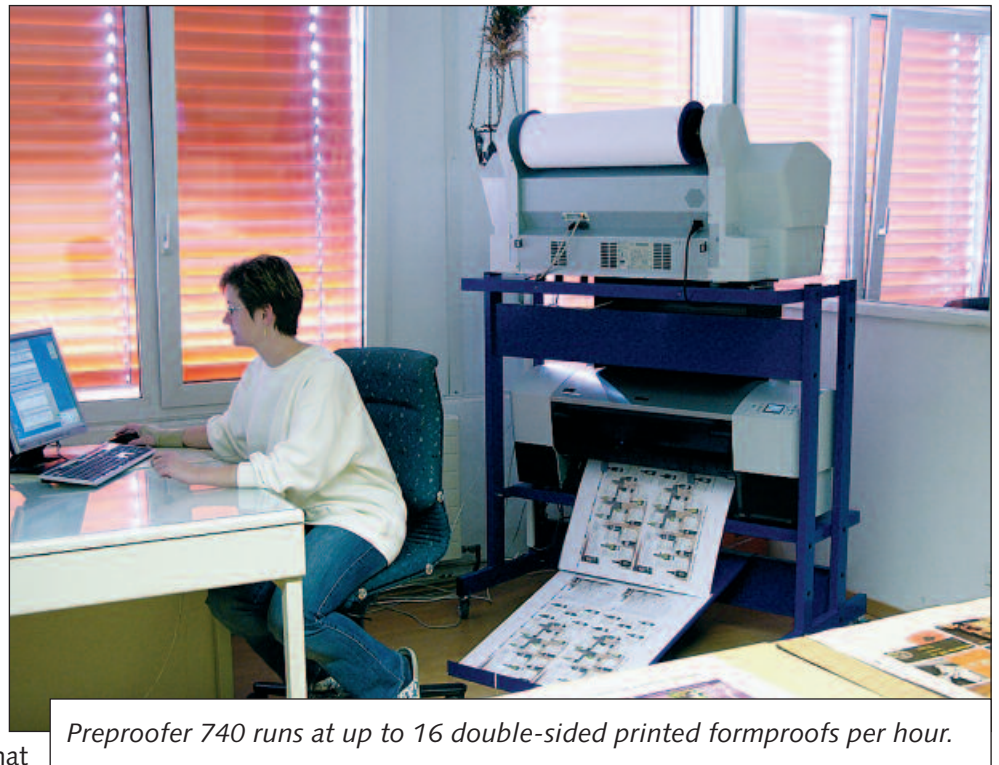
# Printing is better double

With Digital Information's Preproofer 740, double-sided formproof production at Koprnt AG is efficient and economical. The output process is controlled by the DI-Plot software package. Linked with InkZone Perfect, DI-Plot also delivers JDF files for presetting ink-zones automatically on two printing machines of different manufacture.

Koprnt AG has been working with DI-Plot from Zurich-based software developer Digital Information Ltd. since 1998. Located in Alpnach Dorf, the family-owned company is one of the early users of this versatile proof software, which can be integrated into any prepress environment. The company continues to work with a delta workflow, with DI-Plot sampling the ripped bit-maps down to the required resolution to produce a formproof that is absolutely accurate as far as layout and content are concerned.

After nearly ten years and with more than 2000 licences granted worldwide, DI-Plot is still holding its own as a future-proofed solution that can keep pace with the latest develop-

ments in the different prepress workflow solutions. Which is why Koprnt has recently gone over to double-sided proof outputting with a Preproofer 740 from Digital Information. In a further efficiency measure with InkZone Perfect, the company has now made the connection for presetting the ink zones on two offset machines from Komori (52 x 72 cm) and Ryobi (52 x 36 cm), each equipped with five printing units. DI-Plot is used as the data source and control platform for proof outputting on Preproofer 740, and also for InkZone Perfect. For Managing Director Jochen Konrath, who is in charge of operations, the value of the proof software is confirmed over the long term because it can continue in use with Koprnt's upcoming investment in a new workflow system.

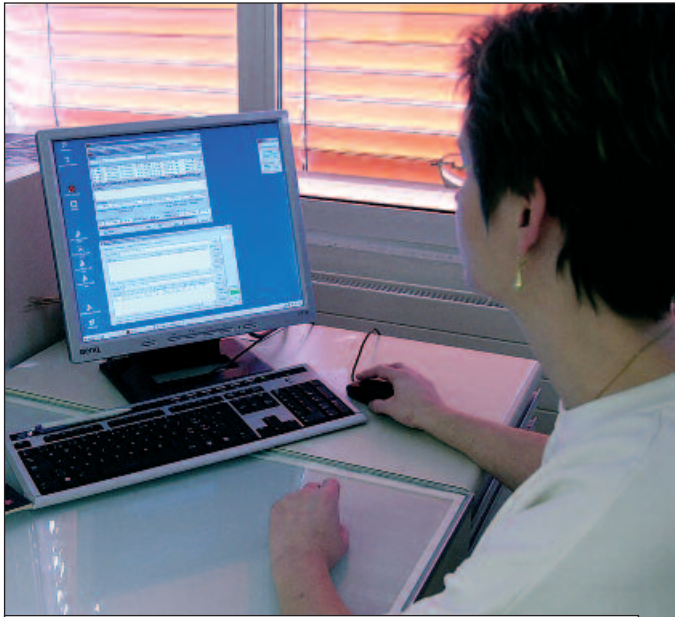


*Preproofer 740 runs at up to 16 double-sided printed formproofs per hour.*

## **Lower costs, higher performance**

In Alpnach Dorf, the annual consumption of print plates is around 13,200. Then there are 6,500 plates for Gersag Druck AG in Emmenbrücke, which was acquired by Koprnt AG in 1989. At Gersag Druck, production runs on a convertible Speedmaster 74 with five printing units.

With the installation of the Preproofer 740 four-page system, Jochen Konrath can confirm that expenditure on proof production is down by almost a half: "Thanks to Digital Information and Preproofer, we achieve clear savings from several points of view. Compared to earlier methods where we could only output single-sided proofs, we now use both sides of the sheet and consume correspondingly less paper. Also, by dispensing with gluing, we are much faster and



*DI-Plot is the control platform and data source for Preproofer 740 and at the same time calculates the JDF data for ink zone presetting via InkZone Perfect.*

more accurate. We gain time, make considerable savings in the cost of materials, and attain a very appealing proof quality that comes close to the actual printing result." And that's not all. With the CMS capability of DI-Plot, when it delivers the formproof Koprnt is at the same time giving customers an "OK-to-Print" that goes a long way to resembling the final print result from the colour point of view, as well.



*At Koprnt, ink zones on a Komori and a Ryobi are automatically preset using InkZone Perfect.*

## **Quality with Piezo technology**

Preproofer 740 is based on two Epson Stylus Pro 7400 printers – currently the fastest inkjet system on the market. Depending on the chosen resolution, speeds reach up to 16 double-sided proofs per hour, while a new screening method allows excellent reproduction quality down to even the finest details and with low resolutions, too. Micro Piezo technology functions on the drop-on-demand principle and enables precision control of the ink droplets as far as size, shape and positioning on the substrate is concerned. In addition to brilliant printing results, the outputting process can be accelerated while saving on ink consumption by varying the droplet size according to the subject.

## **Front and back without turning**

Double-sided formproofs can be produced in one pass without turning the paper thanks to the offset configuration of the vertically displaced printers. Preproofer works on the roll-sheet print principle where output of the front is off the roll and output of the back is on the cut sheet. For outputting the back, the sheet is moved by gravity alone and scanned for precision register printing by the system before DI-Plot releases the data. With no mechanism required for turning the sheet, the result is reduced maintenance and fewer spare parts.

## **With JDF to the ink-zone preset**

Print shop production at Koprnt is in a heterogeneous environment. A five-colour from Komori in 52 x 72 cm format, a five-colour from Ryobi in 36 x 52 cm format, plus two A3 Ryobi models, each equipped with two units, add up to a total of 14 printing units.

The installation of InkZone Perfect for online ink-zone presetting on the five-colour machines makes for an economical solution with a high streamlining effect. With InkZone Perfect, both systems can be supplied with presetting data, thus avoiding the need for relatively expensive proprietary CIP3/4 connections for printing machines from two different manufacturers. DI-Plot calculates the JDF files with the zone values from the bitmap data delivered by the imager RIP and then transfers them to InkZone Perfect. The software is not dependent on the type of printing machine and offers functions like linearization to individual printing conditions, the display of ink-zone values, visualisation of the printing job with the separate imposed composite forms, and



# Digital Information

ductor control. Thanks to a simple drag-and-drop function, the press-man can allocate the individual separations with the preset values for CMYK and special colours to the printing units.

"One thing is clear: the preset solution from Digital Information makes things much simpler and speeds up the process", says Jochen Konrath. "Previously, we needed between 30 and 45 minutes per printing job for setting the ink zones manually. Thanks to InZone Perfect, we are ready for the production run after fifteen minutes. Also, the software allows us to adapt the calculated preset data to the effective ink-zone values and thus further optimise set-up times. A further productivity bonus comes from the option to save job data for repeat jobs."

## Buoyant growth

Koprint AG was founded in 1984 when Austrian Werner Konrath acquired former book printers Ehrli Druck AG in Sarnen. Eleven years later came the move into modern premises in Alpnach Dorf, the present-day location, and the change of name to Koprint AG. Since 1989, Emmenbrücke-based Gersag Druck AG, a company that is well established in the region, has also been owned by Koprint AG. Recently, Kneuss Print AG of Lenzburg was taken over by the service



*The satisfaction shows (from left to right): Gregor Keiser, Manager Prepress, Jochen Konrath, Managing Director Koprint AG, Michael Haenni, Digital Information Ltd.*

provider, which has now grown to employ more than 40 staff. The customer base is mainly manufacturing companies, banks, insurance organisations and firms in the IT sector. Because Koprint remains largely independent from agencies, the services are not restricted to tasks relating to printwork production but range from the development of graphic design concepts through artwork production and printing to the finished product.



*With a simple drag-and-drop function, the press-man assigns the preset values to the separate ink zones on the printing machine.*

## Preproofer 740/780/940/980 configuration

### 1x DIL Preproofer 740/780/940/980 kit

DI-Plot software package  
Stand rack and guide unit for Epson Stylus Pro 7400, 7800, 9400 or 9800  
Electronic printer control unit for Preproofer  
15 cm/6" core adapter for Tecco's «Mediaware DIL Preproofer»  
range of paper (24"/61 cm or 44"/111 cm)

### 2x Epson large format printer

Two Epson Stylus Pro systems, depending on Preproofer model: Stylus Pro 7400 (C11C594011), Stylus Pro 7800 (C11C594001), Stylus Pro 9400 (C11C595011), Stylus Pro 9800 (C11C595001). The printers must be equipped with Epson's optional Ethernet interface «EpsonNet Print Server5» (C12C824342).

### 1x PC

CPU Intel Pentium 4, 3.x Ghz, 1 GB RAM, ATA-Disk 10'000 RPM, 17" TFT-monitor, 10/100/1000 Mbit Ethernet, floppy, CD, keyboard, mouse, USB (for hardware protection key), ethernet network, 1x RS 232 (for serial communication with Preproofer board), Microsoft Windows XP Professional operating system

# Turning to the next page

With the Preproofer 760 and 960 models, prepress specialist Digital Information has developed a system for creating double-sided proofs based on the Epson Stylus Pro 7600 and 9600. Compared with traditional, manual proof production, The Preproofer 760 and 960 lead to considerable cost savings.

Nowadays, formproofs are mostly created by manual adjustment and gluing of front/back imposition. Apart from the considerable time involved, when printing on one side only, the other side of the sheet always will also go unused. Then there is the consumption of glue or wax – experience shows that this is also a considerable cost factor. The quality of these manually produced formproofs is unconvincing, while the double paper thickness has an adverse effect on folded dummy proofs. And although systems for the production of double-sided proofs are available in different configurations,

the technical demands on paper turning and a guaranteed, constant precision registration mean that these solutions are both expensive and costs more in maintenance.

## ***A simple, economic concept***

The Preproofer 760 and 960 are based on the leading Epson Stylus Pro 7600 (4-up) and 9600 (8-up) inkjet technology. Basically, this extremely simple concept involves two printers. They are placed on a platform, one above the other at 180°, and linked by a paper guide unit. Printing on the front side is off a 60-metre role. After automatic cutting, the sheets falls downwards by gravity to reach the lower printer for the printing of the back side. The Preproofer 760 and 960 have a performance that reaches eight double-page proofs per hour (regardless of format) with a register that is accurate to 1 mm.



*The Preproofer 760 and 960 are based on the leading MicroPiezo technology of the Epson Stylus Pro 7600 (4-up) and 9600 (8-up).*

## ***DI-Plot control centre***

DI-Plot, the proofing software package now in use with more than thousand companies, is employed for control and data transmission. (An update is available for existing licence holders.) DI-Plot accepts ROOM data (ROOM = rip once, output many) from almost any prepress workflow. After attaching the preset values ( Recto/Verso, Work and Turn, Work and Tumble etc.), output is automatic via Hotfolder technology. DI-Plot accesses data that has been calculated, screened and imposed in the RIP imaging device. This bitmap data is descreened by the proofing software, and converted to the required resolution for output on the Preproofer. Data integrity between proof and plate is fully guaranteed.

While proof data can be transferred to the two printers via one USB interface each, Digital Information has developed

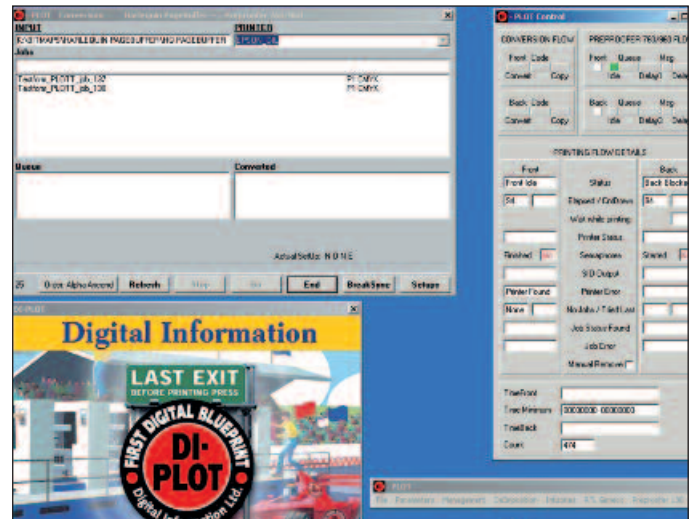
a special electronic unit for controlling and synchronising the printers. Jobs are output automatically via DI-Plot stack by monitoring the printer signals.

## ***Brilliance with Piezo technology***

By using the Epson Stylus Pro 7600 and 9600, Preproofer 760 and 960 users benefit from the unique quality features of MicroPiezo technology. This technology operates on the drop-on-demand principle, enabling precision control of the ink droplets in relation to their size, shape, and pattern on the substrate. It leads to brilliant printing results and, thanks to the variation of droplet size relative to the image, a much faster printing process plus significant savings in ink is achieved. The Epson Stylus Pro uses a seven-colour (CMYKc) printing engine with separate ink cartridges. When it comes to resolution, Digital Information recommends 360 x 360 dpi or 360 x 720 dpi for formproof output, and 720 x 720 dpi for contract proofs.

## ***Curl-free until the very last proof***

The Preproofer 760 and 960 use "mediaware DIL Preproofer DUO" paper. The roll core has a 15 cm (6") diameter that



*Output on the Preproofer 760 and 960 is automatic with DI-Plot. Hotfolders assign the required presettings recto/verso, work and Turn, work and tumble etc. types of job.*

reduces paper curling at the end of the roll. As an additional benefit, the upper printer is equipped with a special anti-curling device. Problem-free proofing with optimum paper flatness is thus guaranteed right to the end of the roll.

## ***A two-shift requirement***

Fotorotar AG located in Egg, Switzerland is one of four printing houses in Switzerland certified to produce securities and share certificates. The company also produces periodicals, business reports and books (published in-house) on 27 printing units, of which 18 are in 8-up format, mostly in two-shift operations. The requirement for formproofs is correspondingly high. Until now, single-sided sheets have been mounted manually with waxed glue, and then cut and folded into four-page signatures. Not counting the time taken and the high consumption of materials, there was always a risk of faulty paste-up, particularly in the case of small-format finished products. Since Fotorotar was so open to the idea of printing double-sided proofs in a single pass, the purchase of the Preproofer 960 was a quick decision. The sheets are imposed on three Signa stations, processed on a Heidelberg Metadimension workflow, and then transferred online to DI-Plot for output on the Preproofer 960.

As a partner, Digital Information was not unknown to Fotorotar AG: this media service provider in the Zürcher Oberland is one of the first to use Remote Publisher, another tool from the Zurich-based software creator. Based on PDF



*With 18 8-up printing units in two-shift operations, Fotorotar AG makes very significant savings in time and materials with the Preproofer 960.*



*Ropress also uses formproofs created on the Preproofer 760 as a contract proof that is submitted to the customer as an "OK-to-print".*

technology, Remote Publisher allows customers of the printing house to edit predefined templates for business stationery themselves, and then release the jobs for printing over the Internet.

### ***The form proof is no more***

In the year 2000, Ropress in Altstetten, Switzerland became the first printing house in the world to be awarded the FSC certificate. The FSC label is presented by the Forest Stewart Councilship to companies that contribute to ecological and socially responsible forest management.

Primarily, the company produces in four-page format and uses KIM PDF as the output workflow for the imposition of finished PDF pages with subsequent 1-bit TIFF file from a Harlequin RIP. The identical data is used for output on the Preproofer 760 and for plate imaging. The Preproofer

760 brings Ropress considerable savings not only in relation to efficient formproof printing: since work began here using the new DI-Plot controlled proof output device, the formproof has at the same time become a contract proof. This is submitted to the customer as an Contract proof. Since the spring of 2004, ISO 12647-2 compliant ICC profiles are stored in DI-Plot. Ropress also uses DI-Plot for calculating ink zone setting values: so-called InkZone files are transferred via Ethernet to the InkZone-Box, converted into the format specific to the printing machine (Heidelberg), and written to the JobCard. The data is input into the CPC system from the printer for automatic ink fountain presetting.

### ***Multi-shift operations***

The benefits of proof production with the Preproofer 760 and 960 are many and varied: in addition to faster output,

costs are significantly lowered by the elimination of with glue or wax. The greatest potential for savings, however, lies in the elimination of the manual adjustment and paste-up work for two sheets printed on one side. Apart from the cost aspects, the user will also experience a boost in quality with the Preproofer. While the MicroPiezo technology delivers far better print quality, printing on both sides of paper gives a superior folded proof.

Existing Epson Stylus Pro 7600 and 9600 printers can easily be retrofitted to the Preproofer 760 and 960. The DI-Plot software is also a significant plus factor: in addition to the control of Preproofer for the output of formproofs with identical content to plate imaging, DI-Plot can also be used to calculate and preset the ink fountain on the printing machine via InkZone Box.

The Preproofer 760 and 960 represent a further module within an overall concept that forges an ideal link between prepress and printing, resulting in improved sequences under economic conditions in any graphics industry operation.

## Preproofer 760/960 configuration

### 1x DIL Preproofer 760/960

Software package DI-Plot  
Stand rack and guide chute for Preproofer 760/960  
Special serial cable, electronic printer control unit for Preproofer, 15 cm/6" core for «mediaware DIL Preproofer DUO», paper 61 cm/24" or 111 cm/44"

### 2x Epson Stylus Pro 7600 (C11C472001BC)

InkJet printers, 61 cm width, equipped with cutting blade, roll input and sheet feeder

or

### 2x Epson Stylus Pro 9600 (C11C473001BC)

inkJet printers, 111 cm width, equipped with cutting blade, roll input and sheet feeder

### 1x PC

Intel CPU 3.x GHz, 1 GB Ram, 40 GB HD, 15" TFT monitor, 10/100 Mbit Ethernet, Floppy, CD, Keyboard, Mouse, 2x USB, 1x RS 232, Windows 2000/XP operating system